



THE TRACTOR TIMES

CONTINUING TO CELEBRATE SUCCESS!



Greg Bishop (Mosgiel)
JOHN DEERE AG SERVICE
TECHNICIAN OF THE YEAR (NZ)
*pictured with Emma Ford,
John Deere Aftermarket & Customer Support Director*



Megan Tree (Gore)
JOHN DEERE PARTS
TECHNICIAN OF THE YEAR (NZ)
*pictured with Micheal Wilkins,
John Deere Aftermarket Marketing Manager*



Logan Robertson (Invercargill)
JOHN DEERE SERVICE
APPRENTICE OF THE YEAR (AUS/NZ)
*pictured with Luke Chandler,
John Deere Managing Director*

When we learned in July that all four of our nominees for the second annual John Deere Technician Awards had been chosen as Regional Finalists (out of 102 nominations, over 8 categories, across Australia and New Zealand) we were thrilled for them - as individuals, but also proud to have Greg Bishop (Mosgiel), Megan Tree (Gore), Megan Foster (Mosgiel) and Logan Robertson (Invercargill) travel to John Deere headquarters in Crestmead, Brisbane and represent Southland and Otago Farm Machinery.

"Having great staff that quietly go about their work being able to step up and represent the company internationally is just outstanding" said Southland Farm Machinery General Manager, Stacey Hitchens.

There were certainly a few nerves among the team as they headed to hands on testing at Crestmead - there were no hints from John Deere on what they would be tested on or what the judges were looking for. They were going in with nothing but the skills they had developed during their careers (and their sparkling personalities!).

The nerves went to the next level when everyone gathered together at 'The W' in Brisbane for a Gala Awards night where the winners of each category would be named.

Then one by one as their categories rolled round we added another winner to our tally, until we had taken out all 3 of the categories we were represented in!

"This year's winners all share extensive technical expertise and a true passion for their work, which made them standouts to our panel of judges," said John Deere Australia and New Zealand Managing Director, Luke Chandler.

A lot of 'WOW's' and an immense sense of pride has rippled throughout the company since they arrived home. Proud almost seems like an understatement, and next year there might be a bit more internal competition for a chance to be nominated!

They are a very humble crew of winners - you won't find their awards displayed publicly, but they are very proud of their achievements. So the next time you happen to spot one of them, feel free to offer them your congratulations, they will (quietly) appreciate it.

WHAT A TEAM WE HAVE!

Hello again to all of our customers and friends out there in Southland and Otago, isn't it great to see a patch of fine weather after all the bad weather barrages the whole of NZ has been experiencing.

Spring is upon us, so if you have started calving or lambing or are yet to start - good luck for this upcoming season. As always if there is anything we can help with in the way of tractors and machinery, service, parts or even just a good old yarn, come in and see us or give us a call.

As you would've seen, I was bumped off the front page for this edition and rightly so. Myself, Murray and the whole team at Southland and Otago Farm Machinery couldn't be prouder of the achievements of our 4 regional finalists, who represented our company proudly at John Deere Limited head office in Crestmead Australia. I was fortunate enough to travel to Australia for the Awards Gala and see us take out all 3 categories we had regional finalists in. A very proud moment as GM of this great company, and a very good night for Southland and Otago Farm Machinery! It's great seeing the hard work and dedication of our amazing staff paying off - well done guys and girls.

Special mention must go to our amazing brand partners John Deere, the tech awards event was a credit to the John Deere brand and their employees, and we are pleased to be part of the Deere family.

The awards has highlighted how we like to invest in the growth and training of our staff - they are our biggest asset, and if you're ever looking for an opportunity to join us, please get in touch and have a yarn - you never know when an opportunity will arise.

As we come into spring and everyone gets very busy again, why not utilise our service due alert notifications (if your tractor



From left: Nick Robinson, Territory Customer Support Manager, John Deere Ltd with our 4 Regional Finalists, Logan Robertson, Megan Foster, Greg Bishop, Megan Tree and me, Stacey Hitchens, GM, Southland Farm Machinery Ltd.

already has the capability). Rather than you having to remember to get in touch with us, we will ring you and organise with you to get your tractor serviced. Give us a call if you would like to have a chat about how technology can help you in your farm or contracting operations.

This Spring and Summer will also be our first season selling and supporting the great Krone products in our 2 Southland branches. We have plenty of products arriving and plenty of parts on hand to keep your machines going.

Enough from me, enjoy this month's Tractor Times.

Stacey Hitchens

Stacey Hitchens, General Manager



TAKE THE LEAP



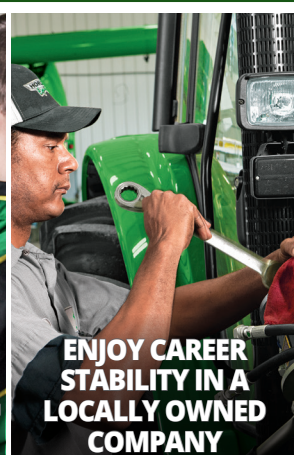
**JOIN A GLOBAL
INDUSTRY LEADER**



**BENEFIT FROM
ONGOING TRAINING**



**WORK WITH CUTTING
EDGE TECHNOLOGY**



**ENJOY CAREER
STABILITY IN A
LOCALLY OWNED
COMPANY**

The Southland Farm Machinery Invercargill team are looking for someone with mechanical experience to join their locally owned and operated Dealership. If you want to gain hands on experience to grow your skills working on some of the most advanced machines in the world, in a supportive team environment where you are valued **WE'D LOVE TO HEAR FROM YOU!**

YOUR TURN TO BE A WINNER

**TO CELEBRATE OUR RECENT SUCCESS AT THE
2022 JOHN DEERE TECHNICIAN AWARDS
- WE WANT YOU TO BE A WINNER TOO!**



Greg Bishop (Mosgiel)
JOHN DEERE AG SERVICE
TECHNICIAN OF THE YEAR (NZ)



Megan Tree (Gore)
JOHN DEERE PARTS
TECHNICIAN OF THE YEAR (NZ)



Logan Robertson (Invercargill)
JOHN DEERE SERVICE
APPRENTICE OF THE YEAR (AUS/NZ)

Simply purchase any John
Deere Oil product* during
September and go in the draw
to win one of our brand new
Parts Connect cabinets

valued at
\$799+GST

4 TO BE WON
(one per branch)

*Promotion runs 12.05am 1 September
2022 to 11.59pm 30 September 2022.
Includes over the counter & mobile parts
van purchases and workshop servicing.
All sizes of John Deere oil products are
eligible. One entry per item sold – if
multiple items are purchased in one
transaction, one entry for each item.



**S SOUTHLAND
FARM MACHINERY**

**O OTAGO
FARM MACHINERY**

SUPER SPRING SAVINGS

ON ALL JOHN DEERE COMPACT TRACTORS*

1 SERIES
21 - 23 HP

2 SERIES
23 - 36 HP

**6-YEAR
POWERTRAIN
WARRANTY†**

3 SERIES
37 - 44 HP

4 SERIES
38 - 48 HP

**LIMITED STOCK AVAILABLE
IN BRANCH NOW**

**JOIN THE
JOHN DEERE
FAMILY**



*Discount applies to machines delivered prior to 31st October 2022. Images used for illustration purpose only.

†Conditions apply. Valid on 1 - 4 Family Utility Tractors. 6 year/2000 hours (whichever comes first). See us for more information on the Limited Warranty for New John Deere Turf & Utility Equipment.

S **SOUTHLAND
FARM MACHINERY**

O **OTAGO
FARM MACHINERY**

A NATURAL PARTNERSHIP



Stags and Deere - it just works right?! We are pleased to be backing the Southland Stags for their 2022 campaign (and not just because of all the plays on words you can create with Stags & Deer!). With a squad highlighting the local talent we have available, this aligns nicely with locals supporting locals.

Make sure you get along to support them if the opportunity arises. Antlers Up!

DRESSED UP AND READY TO GO



Ever since our Southland branches (Invercargill and Gore) took over the Krone dealership we have been looking forward to seeing sights like these.

This brand new John Deere 6155M is headed out to its new owner fully equipped with a Krone EasyCut F320M Push Mower and a Krone EasyCut R360 Mower.

With spring upon us, this is just the first of many we will see leaving our dealerships with this great combo.

Our parts departments are also well stocked, and our servicing team is up to speed so we can keep your operation running as smoothly as possible during busy times.

NEVER TOO YOUNG

The Gore Playcentre recently enjoyed a guided tour of our Gore branch, showing that you're never too young to start your love of green and gold.



BETTER WORK VIEWS



Not many woolsheds have a view like this one! Bruce from our Cromwell team delivered Lake Hawea Stations new John Deere 6155M to Jack Mansfield (left), and Tony Barrett (right) and managed to grab a couple of pics before it was put straight to work in what must be one of the most beautiful backgrounds around.

JOHN DEERE GATOR TE

GO ELECTRIC



- Zero fuel consumption
- Full recharge time of 12 hours
- 48 Volt electric drive system with built in battery charger
- Comes standard with roll over protection
- Super easy entry and exit

IN STOCK & AVAILABLE NOW
come and see us today to go green!

**JOIN THE
JOHN DEERE
FAMILY**

S **SOUTHLAND
FARM MACHINERY**

O **OTAGO
FARM MACHINERY**

A JOHN DEERE CONNECTED WORKSHOP

Being a John Deere Dealership provides us with opportunities to upskill in many areas of the business through John Deere led Dealer Development programs.

Recently we undertook a 'Connected Support' workshop as part of a development program. The focus of this was to ensure we were successfully using the John Deere tools to their full advantage, and consistently across all of the branches.

Some of the outcomes they achieved during the day was a better understanding across the group of when was the best time to use these tools to achieve the best outcomes.

"Ultimately it is the customer who benefits" said Mosgiel Service Manager, Sean Denston.

"Although this can make diagnostics simpler for us, it's the time it saves the customer on tracing the issue, and then getting parts and having to travel back to the tractor, this can add up" he said.

If you're still figuring out how all of this works (or are interested in learning more), our service team are happy to have a chat anytime with you around the John Deere Connected Support tools.



It was great to be able to get all of the Service Managers from across the group in one room at one time plus the staff who support them in the background.

TWICE AS NICE



You're not seeing double, that is 2 John Deere 6140M's all loaded up ready for delivery to their new home.

SHOWING OUR SUPPORT



Blue Mountain College Touring Party use these Prattley mobile yards to fundraise for a cultural and sporting experience tour to Australia every 3 years, this is open to years 10-13.

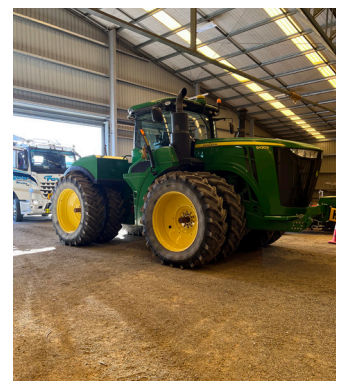
In addition to the tailing gang they also dabble in firewood and have a catering gig.

Stretch and the Gore team supplied some Prattley gates to go with the mobile yards, and now we get to have our support shown all around the tour as well. Good luck with the season!

SOUTHLAND HUG A RIG DAY

How could we not get behind a day designed to be "a fun filled day out for people of all ages with special needs, or complicated life long medical conditions". Awesome to see everyone out and having a great time with all of the different machinery!

Big thanks to Andy from our Gore branch for giving up his time, and to Mark and Jason at Waipounamu Contracting for the use of their John Deere 9420R, and Koi Contracting for the John Deere 8365R.



FOR SALE

Ask us about **FINANCE, FREIGHT & WARRANTY** options*

JOHN DEERE 7230R

\$129,000 + GST



230 HP, 5640 Hours, CommandQuad, Rear 3-Point Hitch
CROMWELL SU# 63705

JOHN DEERE 5125R

EX
DEMO

\$141,000 + GST



125 HP, 141 Hours, John Deere 543R MSL Loader
CROMWELL SU# 43631

CLAAS 530 ARION

PRICE
REDUCED

NOW \$87,000 + GST



130 HP, 3100 Hours, Stoll FS40.1 Loader, Tidy tractor
GORE SU# 63855

JOHN DEERE 7230R

\$89,000 + GST



230 HP, 6800 Hours, 25 Speed E23 Powershift Trans
INVERCARGILL SU# 64119

JOHN DEERE 6150R

\$105,000 + GST



150 HP, 5827 Hours, JD H360 SL Loader, 1 owner (2012)
INVERCARGILL SU# 64327

JOHN DEERE 6130R

INCLUDES
DUALS

\$69,700 + GST



130 boost to 50HP, 6839 Hours, Pearson 20-43 SL Loader
MOSGIEL SU# 64428

OTHER MACHINERY & IMPLEMENTS

Kinghitter Series 2 Expander.....**\$35,000**+GST

340kg hammer, 2020 model MOSGIEL SU# 45416

Trimax Stealth S2 340.....**\$10,000**+GST

Weight 995kg, 2010 model GORE SU# 63922

Seppi Mulcher.....**\$4,800**+GST

Reversible setup, new bearings and belt CROMWELL SU# 64180

Trimax Warlord 235.....**\$8,000**+GST

2017 model, right hand offset roadside rollers GORE SU# 64152

VDW Fodder Beet Chopper Bucket.....**\$9,500**+GST

Merlo hitch, 2.7m wide front MOSGIEL SU# 64416

Celli Rotor Spike 3 metre (NEW).....**\$27,500**+GST

Shop soiled machine - has paint fade MOSGIEL SU# 40344

Razol 4.5m Folding Cultivator.....**\$49,000**+GST

Aged demo unit, 4.5m working width MOSGIEL SU# 41075

Walco Allspread 12.75.....**\$5,750**+GST

3 Point Linkage Fertilizer Spreader INVERCARGILL SU# 64339

* Conditions apply. Approved commercial applicants only. ALL PRICES EXCLUDE GST

S **SOUTHLAND**
FARM MACHINERY

INVERCARGILL
93 North Road
P 03 215 9132

GORE
12 Charlton Lane
P 03 208 8203

O **OTAGO**
FARM MACHINERY

MOSGIEL
13 McGlashan Street
P 03 489 0472

CROMWELL
12 Elspeth Street
P 03 445 1046